

MSJC Board of Trustees ACCREDITATION JEOPARDY

Queue the music...start humming!

Jeopardy

Name this Board Member	Governance	CEO	The BOT	Potpourri
<u>\$100</u>	<u>\$100</u>	<u>\$100</u>	<u>\$100</u>	<u>\$100</u>
<u>\$200</u>	<u>\$200</u>	<u>\$200</u>	<u>\$200</u>	<u>\$200</u>
<u>\$300</u>	<u>\$300</u>	<u>\$300</u>	<u>\$300</u>	<u>\$300</u>
<u>\$400</u>	<u>\$400</u>	<u>\$400</u>	<u>\$400</u>	<u>\$400</u>
<u>\$500</u>	<u>\$500</u>	<u>\$500</u>	<u>\$500</u>	<u>\$500</u>

Final Jeopardy

1 - \$100

- The Board Member that occasionally tweets during Board Meetings.
- Who is Trustee Tom Ashley?



1 - \$200

- This Board Member provides Public Service Announcements (PSAs).

- Who is Trustee Dorothy McGargill?



1 - \$300

- Trustee McGargill enjoys this beverage with her cookies
- What is milk?



1 - \$400

- This Board Member is a recovering ALO.
- Who is Trustee Sherrie Guerrero?



1 - \$500

- This Board Member represents Trustee Area 3.
- Who is Trustee Bill Zimmerman?



2 - \$100

- This governance structure provides the institutional framework for encouraging and promoting the collaboration of all constituencies to actively participate and contribute in making recommendations for improvements related to programming, planning, budgeting, governance and over-all decision-making.
- What is participatory or shared governance?



2 - \$200

- The number of participatory governance committees that exist at the College?
- What is 14 participatory governance committees? *Basic Skills, Budget, CTE Advisory, College Council, Professional Development, Diversity, ETC, ICTC, IPC, IAPRC, SSSP, Safety, Equity, Student Services*



2 - \$300

- The leadership group that represents the classified professionals and their opportunity to participate in the formulation and development of policies and procedures that have a direct effect on classified staff.
- Who is the Classified Senate?



2 - \$400

- The College relies on this governance group in matters affecting curriculum, student learning programs and services, and other academic areas.
- Who is the Academic Senate?



2 - \$500

- This committee has the responsibility per AP4020 to establish prerequisites, co-requisites, advisories on recommended preparation, curriculum development, GE requirements, graduation requirements, and grading policies
- What is the Curriculum Committee?



3 - \$100

- Name the Superintendent/President shown in this picture



- Who is Dr. Roger W. Schultz?



3 - \$200

- In 2018, Dr. Roger Schultz will have been the Superintendent/President of Mt. San Jacinto College for how many years?
- What is 10 years?



3 - \$300

- The Vice Presidents of Business Services, Instruction, Student Services, Human Resources, and the Executive Dean of Institutional Effectiveness, Assessment, and Student Success comprise what institutional leadership group?
- What is the Executive Cabinet?



3 - \$400

- The Superintendent/President delegates authority to this Vice President to assure compliance with the Board Policy and Administrative Procedures related to Fiscal Management.
- Who is Vice President of Business Services Beth Gomez?



3 - \$500

- The Superintendent/President is the Chair of this primary participatory governance committee, which all other committees route information and recommendations for approval by the Board of Trustees.
- What is College Council?



4 - \$100

- The duties and responsibilities of the Board of Trustees are defined in the policies incorporated in what Chapter of the MSJC Board Policy Manual.
- What is Chapter 2?



4 - \$200

- In accordance with Board Policy 2435, formal evaluation of the Superintendent/President occurs how often?
- What is biennially?



4 - \$300

- The MSJC Board of Trustees formally approves these foundational institutional statements every three years.
- What are the Mission, Vision, and Values Statements?



4 - \$400

- These key performance metrics are approved annually by the Board of Trustees and set the aspirational goals for the District.
- What are the IEPI Indicators?



4 - \$500

- This process occurred in fall 2016 with the Board of Trustees using the results to formally adopt the 2016-2018 Board Goals.
- What is the Board of Trustees Self-Evaluation Process?



5 - \$100

- The primary group responsible for overseeing the Accreditation ISER development process at Mt. San Jacinto College?
- What is the Accreditation Steering Committee?



5 - \$200

- The student pictured here that is crazy enough to act as the Student Trustee

- Who is Makeez Manely



5 - \$300

- Communication, Critical Thinking, Aesthetic Awareness, Social Awareness, Responsibility, and Scientific Awareness
- What are Core Competencies?



5 - \$400

- The group that officially represents the needs of nearly 17,000 enrolled students at Mt. San Jacinto College
- What is a Student Government Association?

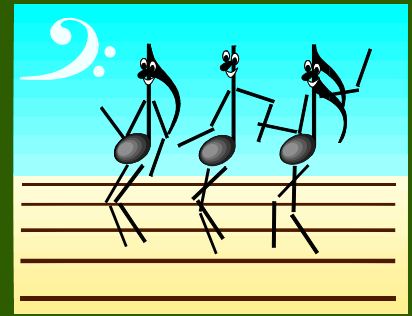


5 - \$500

- The dates in 2018 when no one from the institution is allowed to be on vacation, at a conference, sick, or dying
- What is March 12-15, 2018 and the two weeks prior?



Final Jeopardy



- The number of years that Mt. San Jacinto College is aiming to secure through the reaffirmation process

- What is 7 years!!!!

