

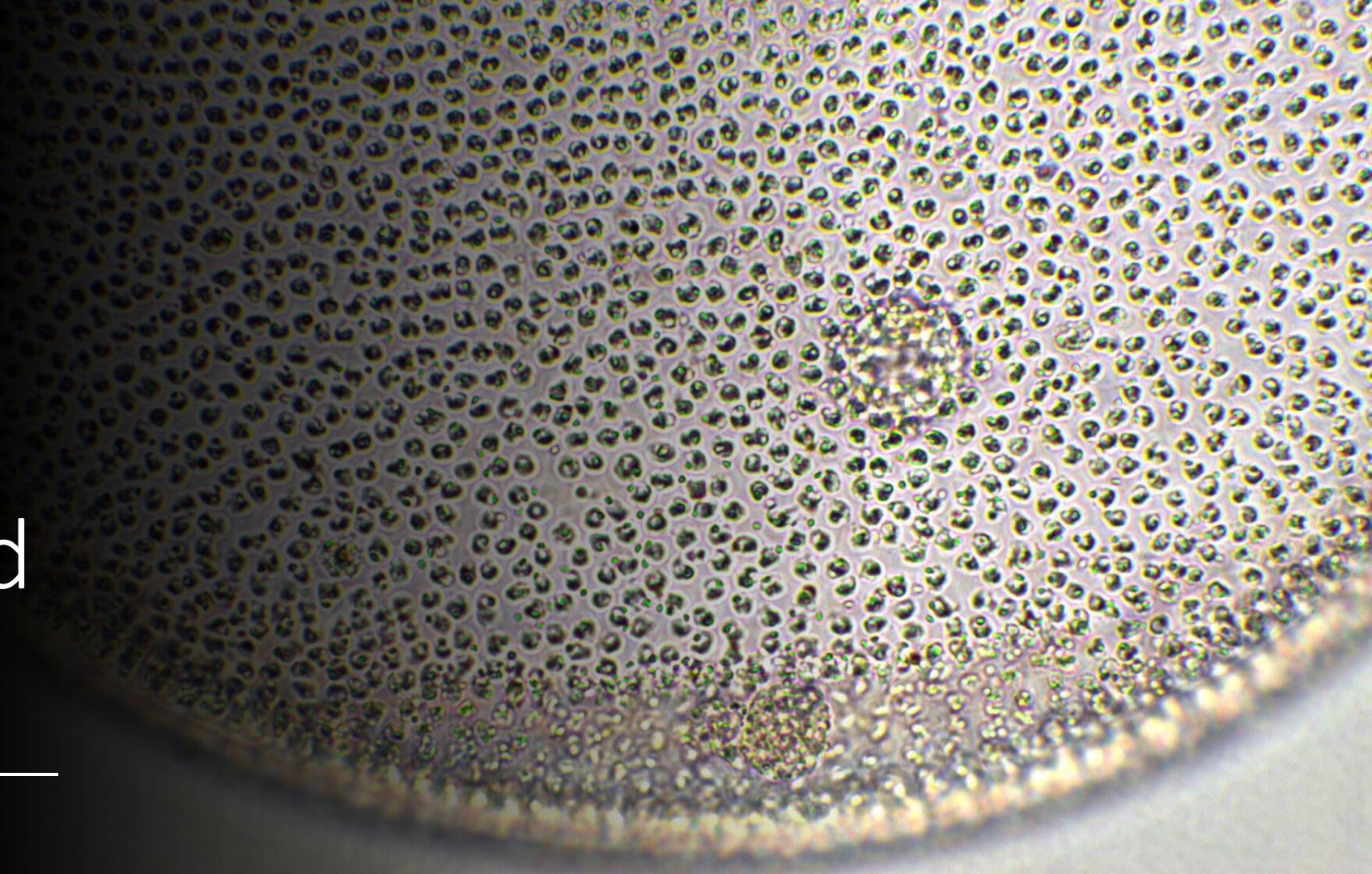


FA23 Enrollment Update

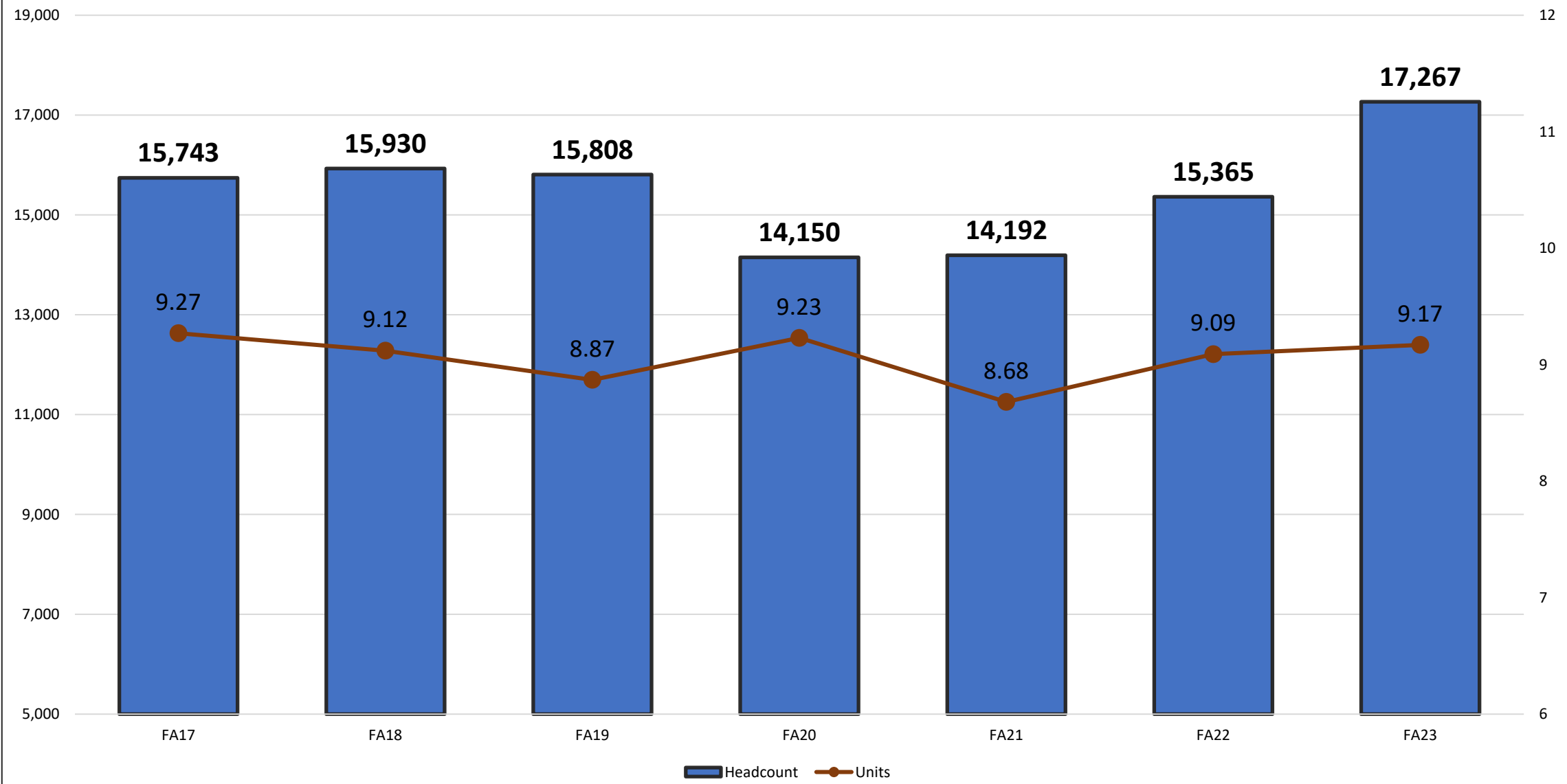
10.12.2023



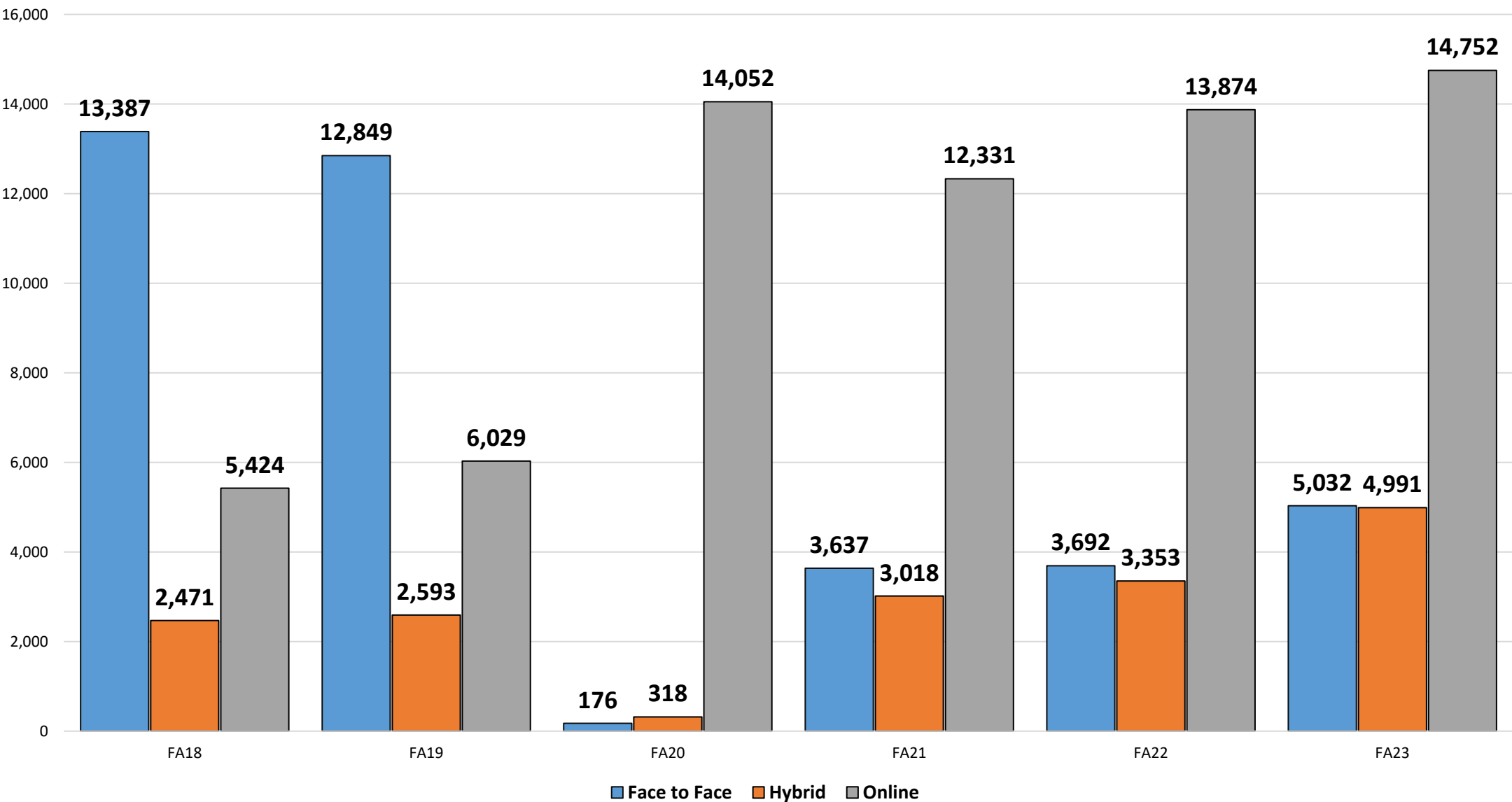
Headcount and Section Count



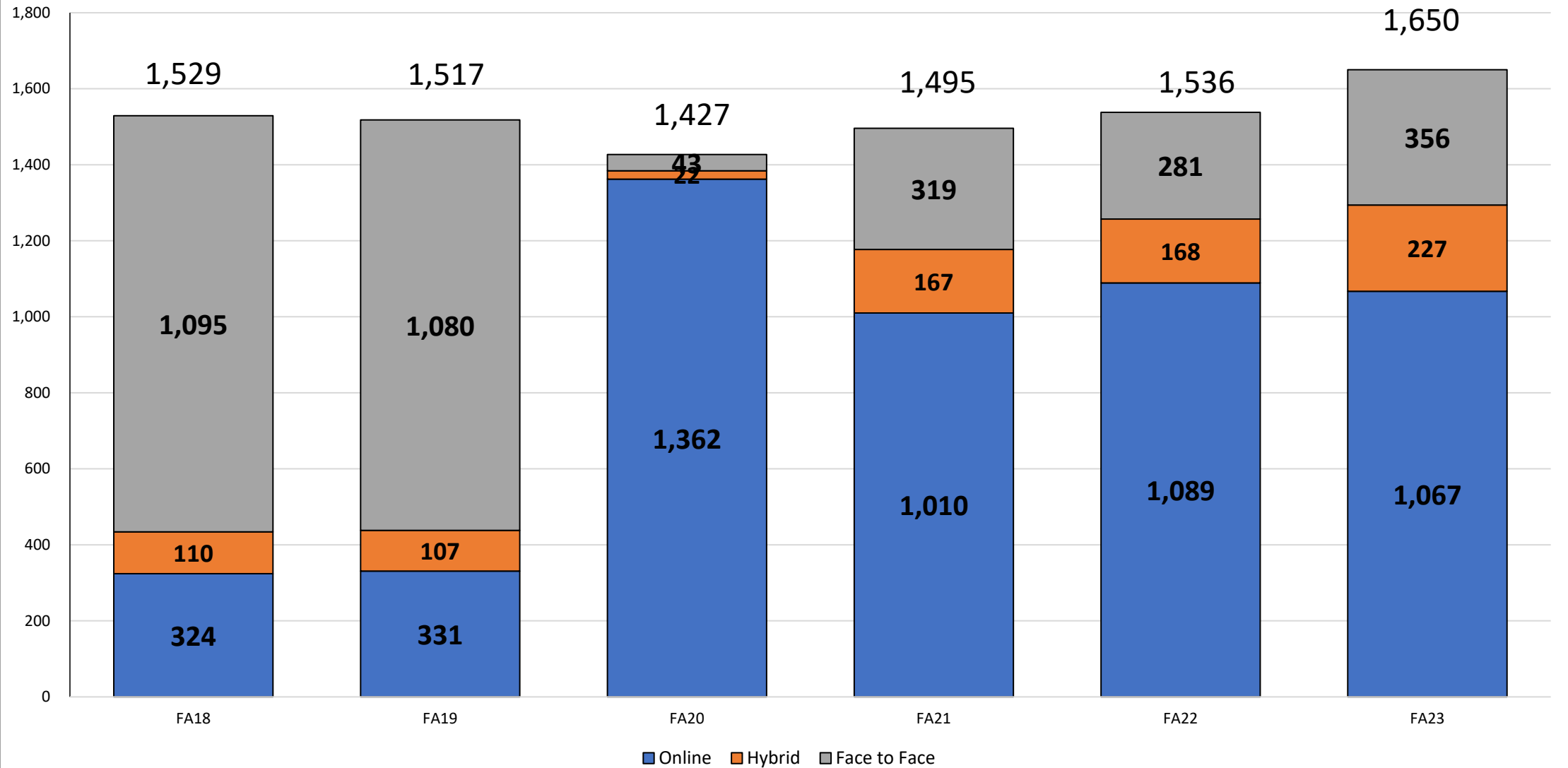
Headcount and Avg Units Attempted



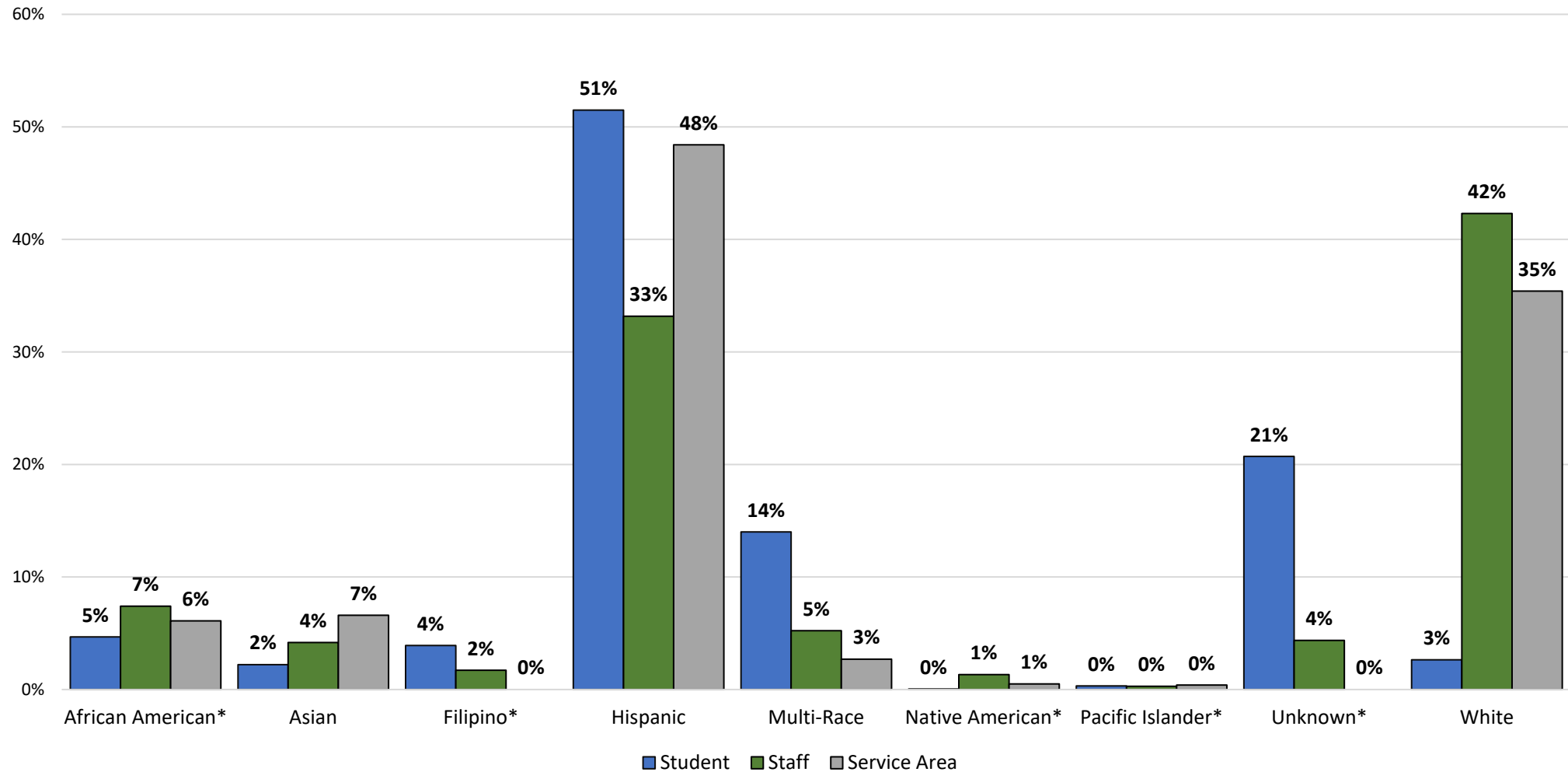
Headcount by Modality



Total Sections by Modality



Ethnicity Students, Staff, Service Area



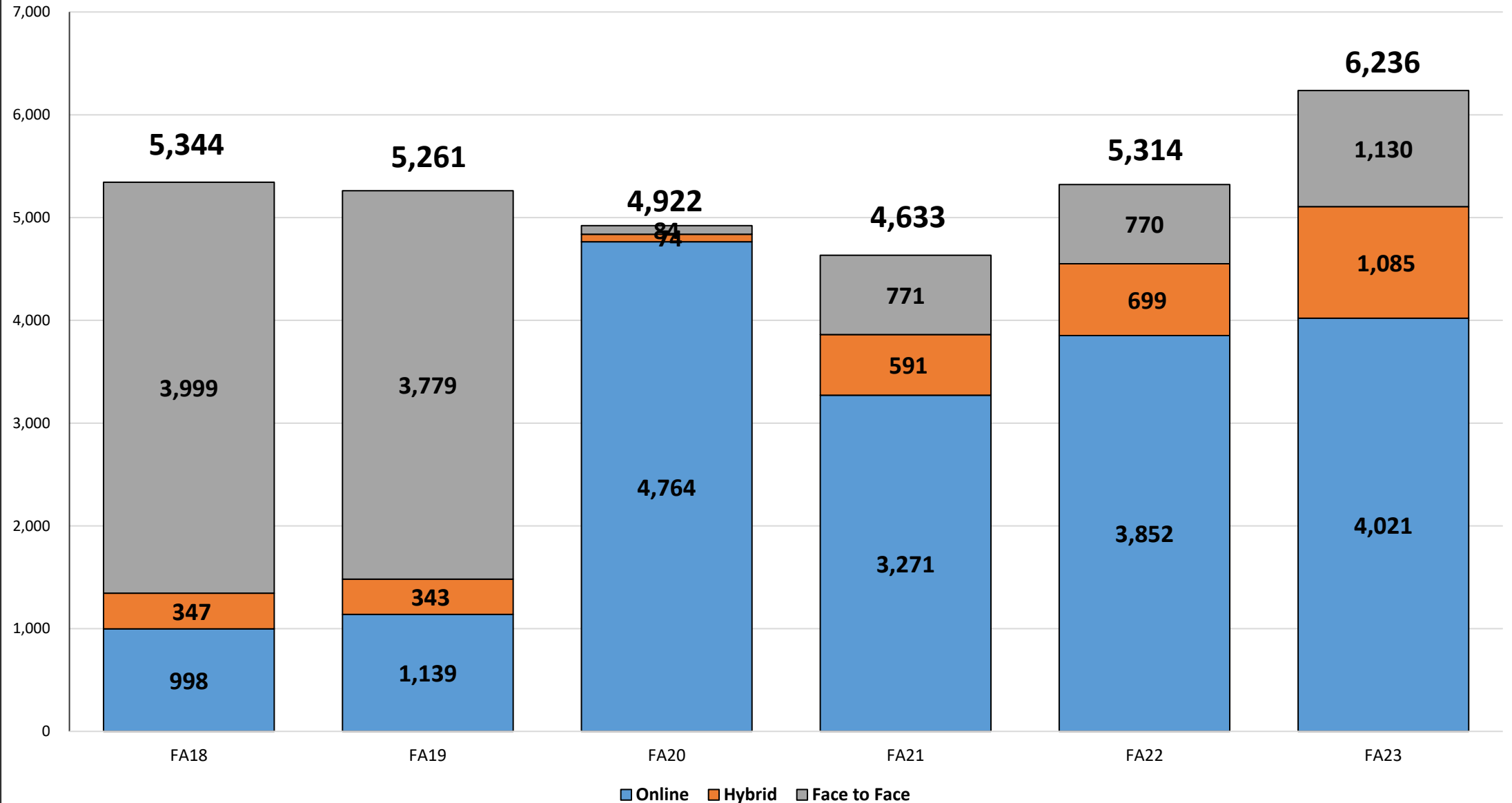
The demographic data in this report is compiled from CCCCO for “Students”, HR for “Staff”, and Lightcast Analyst for “Service Area.”

*Categories for “Service Area” do not align perfectly with CCCCO categories. African American, Native American, and Pacific Islander correspond to Black, American Indian, and Native Hawaiian or Pacific Islander respectively. Filipino, and Unknown are not listed as options in the Lightcast data set.

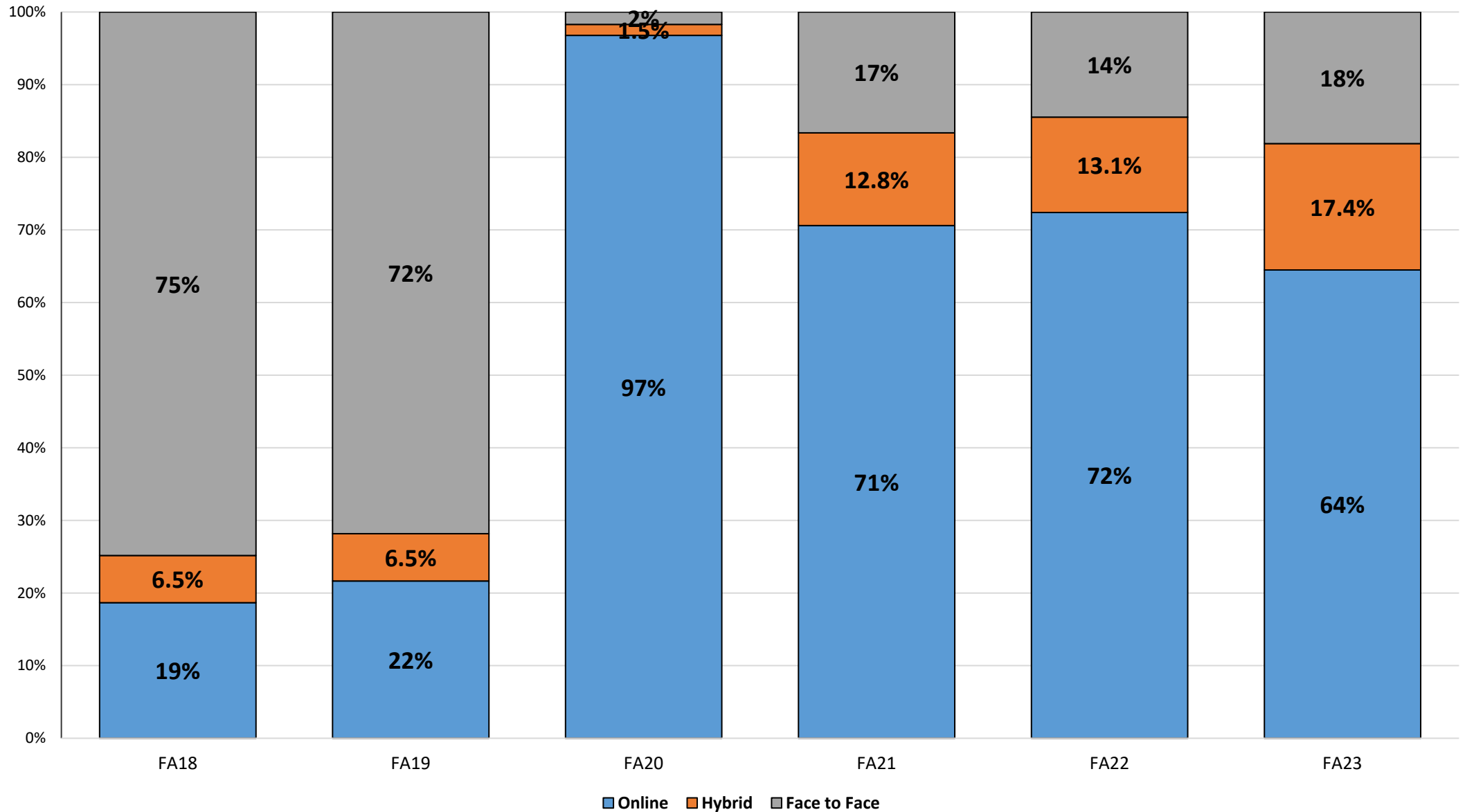


FTES

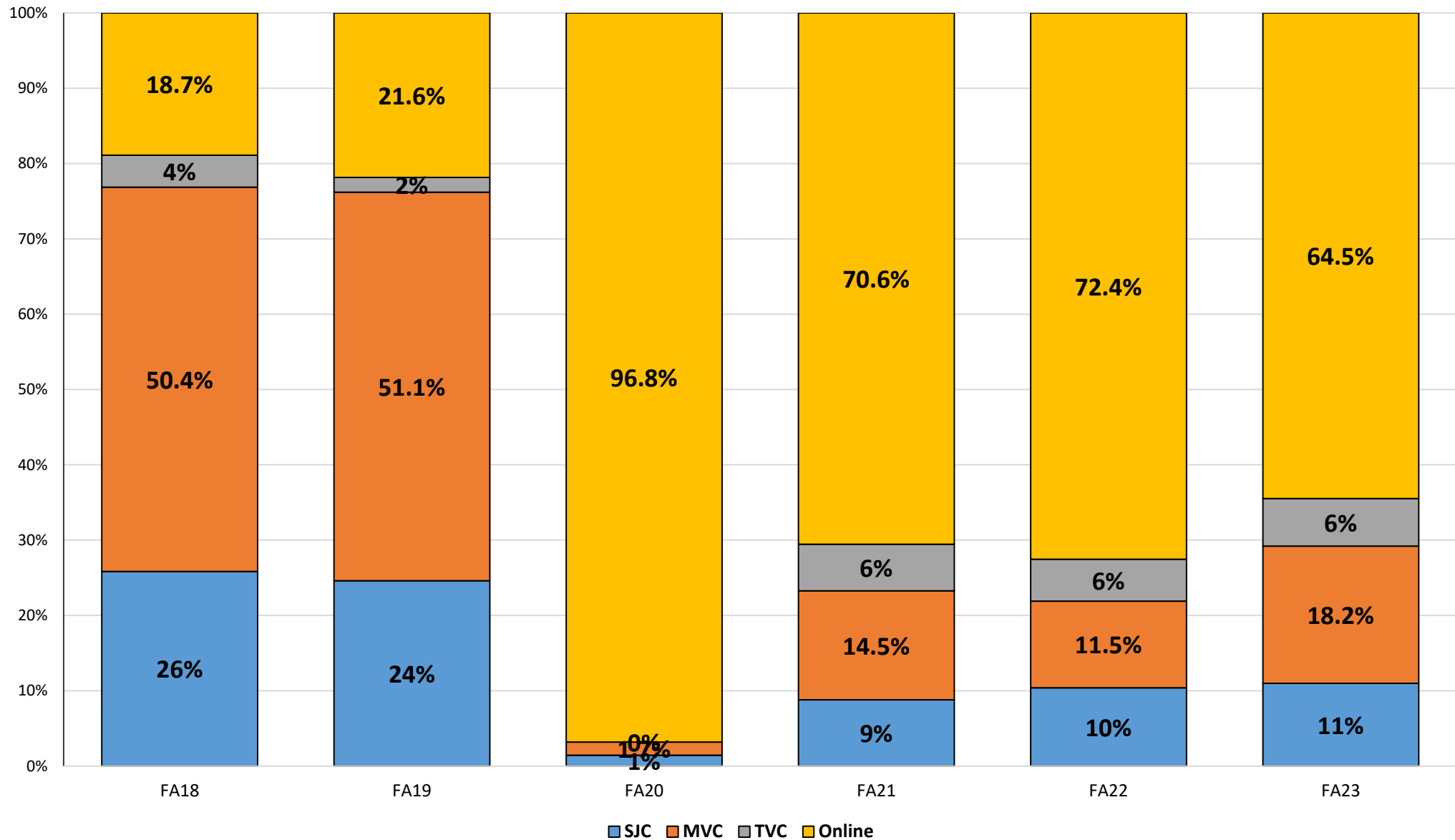
FTES by Modality



% FTES by Modality

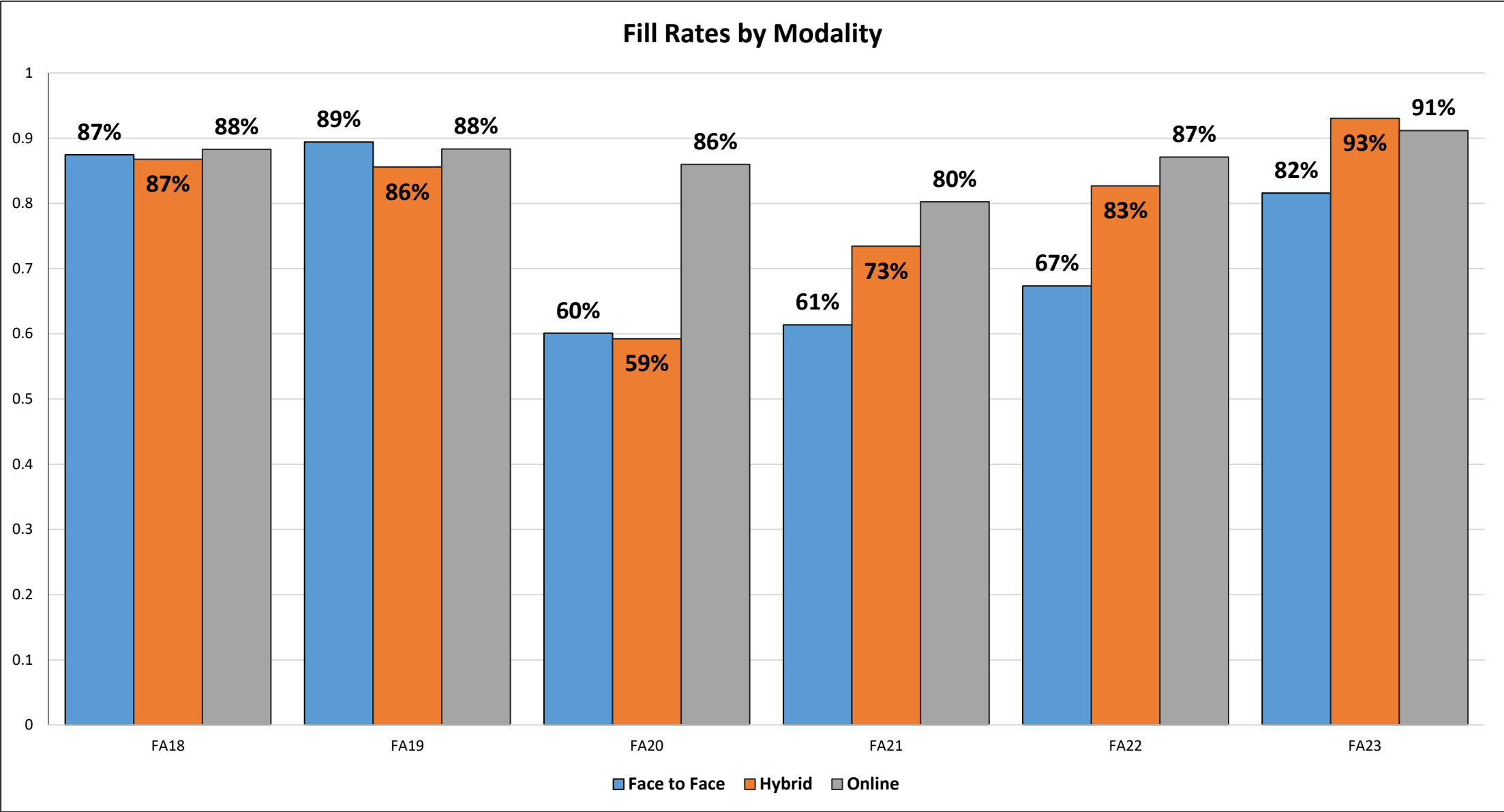


% FTES by Location

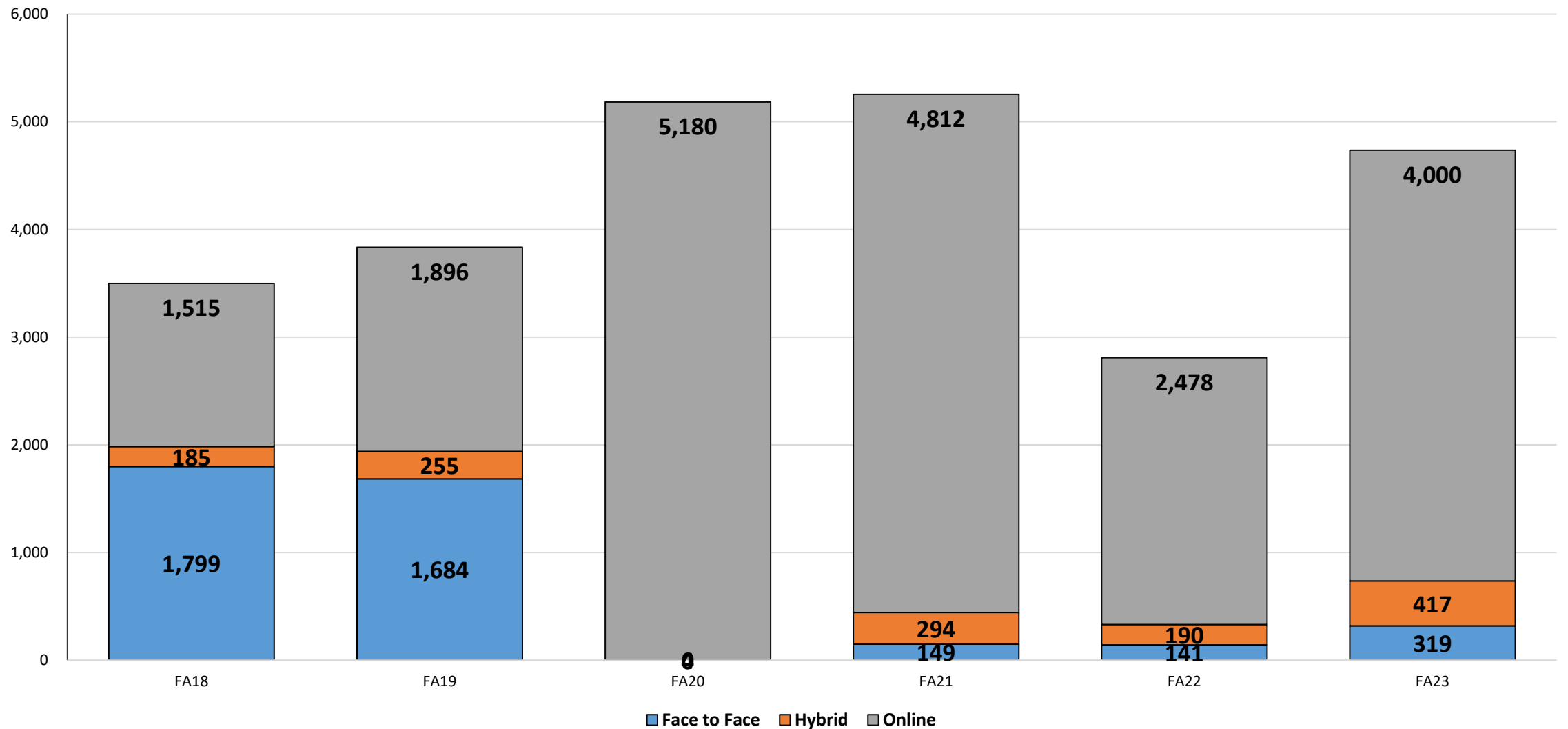




Fill Rates and Waitlists



Waitlist Seats by Modality



Questions?

10.12.2023

